

Answers: 6.1.4.2 Lab - Hard Drive Maintenance in Windows 8

Introduction

In this lab, you will examine the results of using Disk Check and Disk Defragmenter on a hard drive.

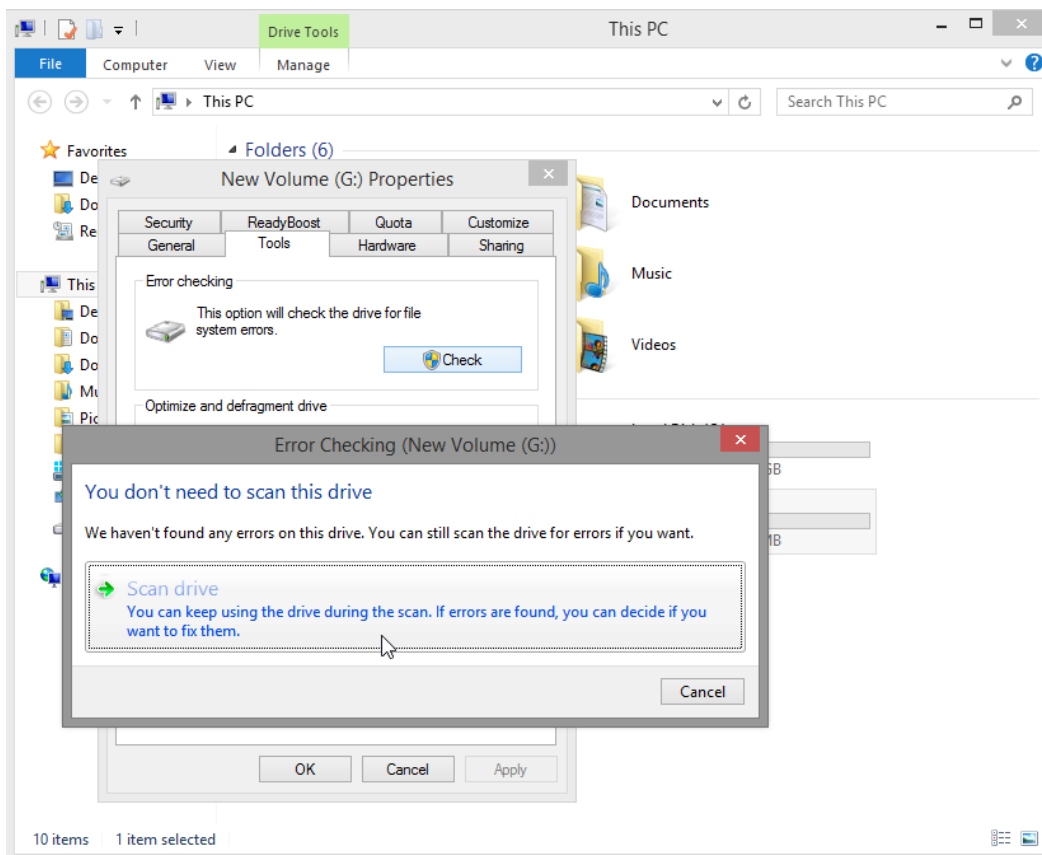
Recommended Equipment

- A computer running Windows 8
- Two or more partitions on the hard drive.

Step 1: Run the Error-checking Tool on a disk volume.

- Log on to Windows as an administrator.
- Open **Windows Explorer**. Right-click **New Volume (G:) > Properties > Tools > Check Now**.

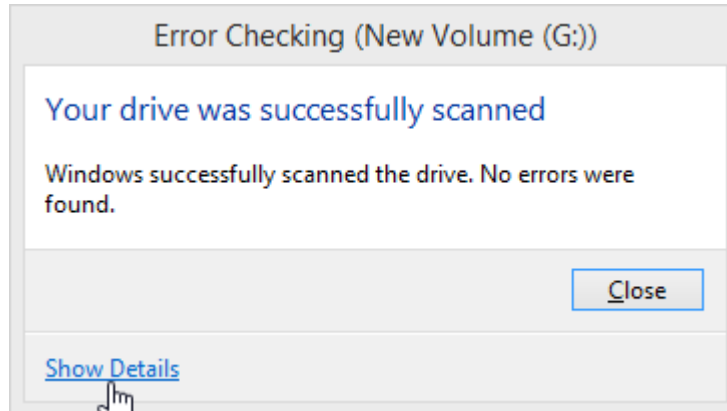
Note: Substitute the volume name and drive (G:) for those used in your computer.



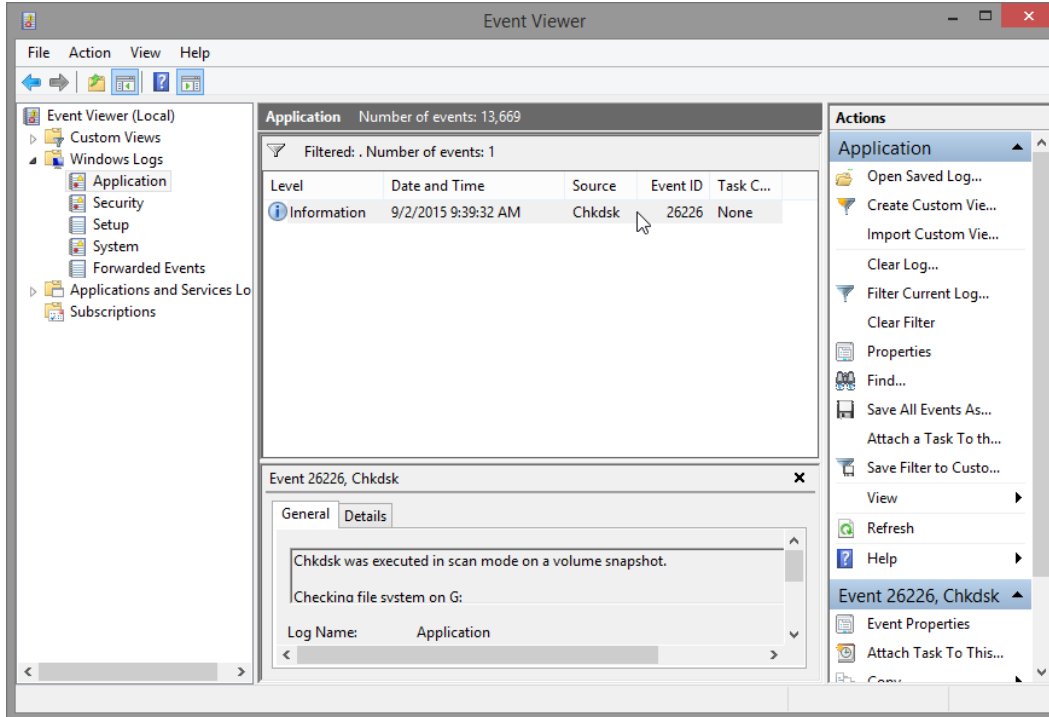
- Because Windows monitors the drives and runs automatic scheduled scans, you may see a message saying that **You don't need to scan this drive**. Click **Scan drive**.

Lab - Hard Drive Maintenance in Windows 8

- d. The **Your drive was successfully scanned** window opens. Click **Show details**.



- e. The **Event Viewer** opens to display the **Chkdsk** event. Double click the **Information** event in the middle pane.



How many stages were processed?

Were any problems found with the volume?

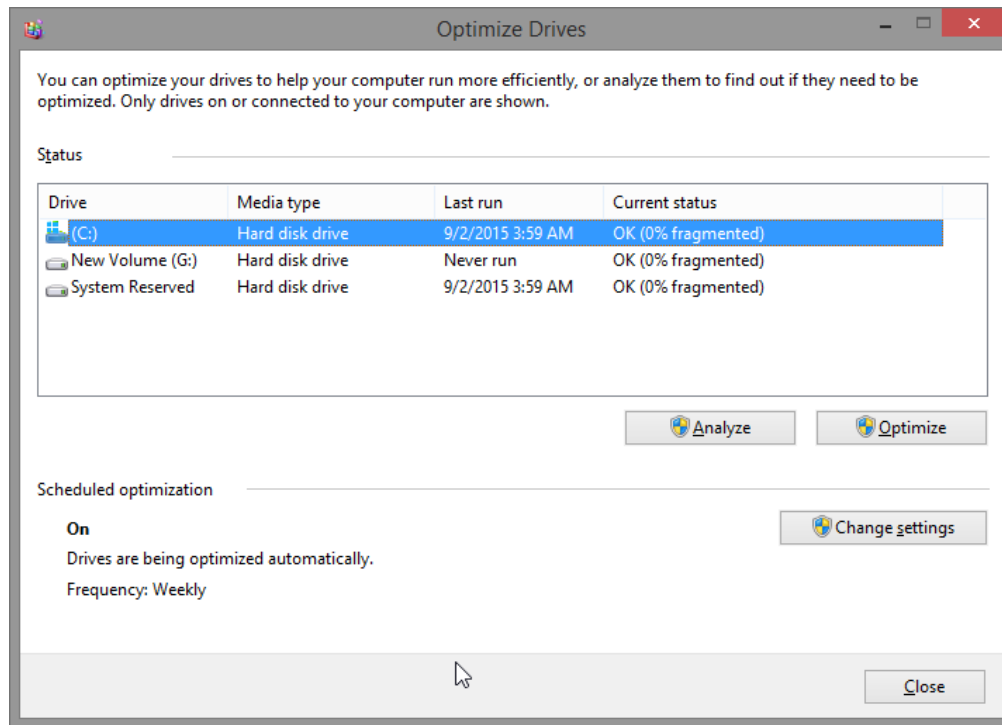
If so what are they?

- f. Click **Close**.
- g. Close all open windows.

Step 2: Use the Disk defragmenter tool.

Note: Do not perform this step if your computer has an SSD drive. It is unnecessary to defragment SSD drives.

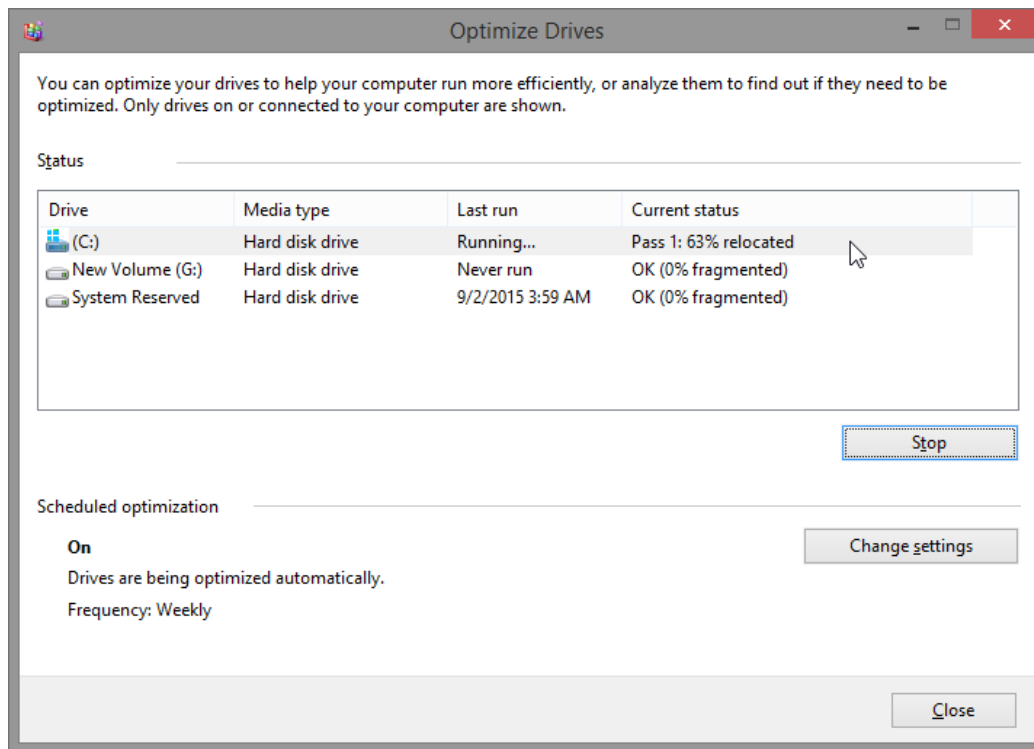
- a. Open **Windows Explorer**. Right-click **drive (C:) > Properties**. Click the **Tools** tab > **Optimize**.
- b. The **Optimize Drives** window opens. Click **(C:) > Analyze**.



What percentage of the disk is fragmented?

Lab - Hard Drive Maintenance in Windows 8

- c. Click **Optimize** to start defragmenting the disk.



What is the first process during defragmenting (See **Current status** column)?

What are the four tasks performed for each pass (See **Current status** column)?

How many passes did it take to defragment drive C:?

- d. When defragmenting is complete, click **Close**.
e. Close all windows.

Note: It is not possible to view the detail of the defragmented hard drive through the GUI version of defragmenter.